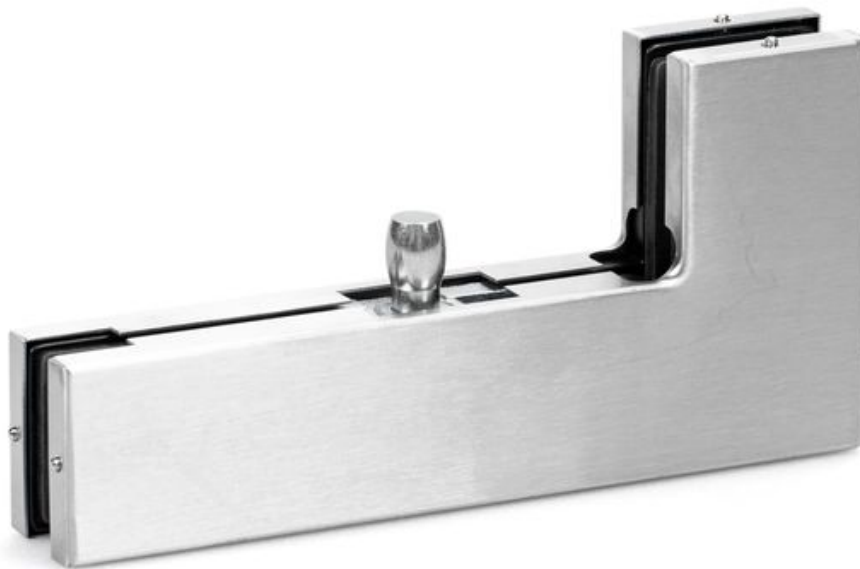


Product data sheet

PT 40 *



Glass Fitting angle fanlight fitting with pivot bearing bolts (ø 15 mm)

AREAS OF APPLICATION

- For static toughened glass assemblies
- For glass thicknesses 10 and 12 mm
- For internal and external systems

**PRODUCT FEATURES**

- Elegant cover caps made of polished or brushed stainless steel
- Problem-free adjustment to glass thicknesses of 10 – 12 mm

TECHNICAL DATA

Productname	PT 40 *
Dimensions	217 x 32 x 105 mm
Width	32 mm
Length	217 mm
Height	105 mm
Glass thickness (min.)	10 mm
Glass thickness (max.)	12 mm
Type of installation	Glass installation

VARIANTS / ORDER INFO

Designation	Description	Ident-No.	Colour	Dimensions	Glass thickness
GEZE Glass Fitting PT 40 *	Angle fanlight fitting with pivot bearing bolts (ø 15 mm)	169765	Satin stainless steel	217 x 32 x 105 mm	10 - 12 mm
GEZE Glass Fitting PT 40 *	Angle fanlight fitting with pivot bearing bolts (ø 15 mm)	180441	Polished stainless steel	217 x 32 x 105 mm	10 - 12 mm

* The products designated above may vary in form, type, characteristics, function, or availability depending on the country. Please get in touch with your GEZE contact person if you have any questions.